



HEDIS[®] Lunch and Learn

**Weight Assessment and Counseling
for Children and Adolescents**

Sherry Griffith RN, BSN

June 2023

HEDIS[®]

News You can Use



Lunch and Learns will reinforce and elaborate on HEDIS News You Can Use information

Monthly Webinars: 30 minutes, 1 HEDIS topic



Weight Assessment and Counseling for Children and Adolescents (WCC)



Weight Assessment and Counseling for Children and Adolescents (WCC) - Criteria

Denominator - Who is in the measure?

- Members who turn 3-17 years of age in the measurement year
- Had an outpatient visit with a PCP or OB/GYN in the measurement year

Hybrid Methodology
(claims + chart review)

Does NOT have to be
a well-child visit!

Weight Assessment and Counseling for Children and Adolescents (WCC) – Criteria

Numerator - What makes the member compliant?



1. BMI Percentile

- ✓ **Coded/billed!**
- ✓ 3 elements – HT, WT AND BMI percentile
- ✓ Must be BMI percentile, NOT a BMI value
 - Can be charted as a percentile in the office note
 - Plotted on a BMI growth chart (NOT HT or WT charts)



2. Nutrition

- ✓ **Coded/billed!**
- ✓ Discussion/assessment of current nutrition behaviors
- ✓ Checklist indicating nutrition was addressed
- ✓ Counseling or referral for nutrition education
- ✓ Nutrition education material given & discussed
- ✓ Nutrition anticipatory guidance
- ✓ Weight or obesity counseling



3. Physical Activity (PA)

- ✓ **Coded/billed!**
- ✓ Discussion/assessment of current PA behaviors
- ✓ Checklist indicating PA was addressed
- ✓ Counseling or referral for PA
- ✓ PA education material given & discussed
- ✓ PA anticipatory guidance
- ✓ Weight or obesity counseling

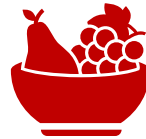
Weight Assessment and Counseling for Children and Adolescents (WCC)

What does NOT make the member compliant/does NOT meet?



BMI Percentile

- × BMI value only
- × Only BMI percentile code and descriptor in chart (if chart review)
- × Ht/Wt growth chart plots
- × Ranges (“85th - 95th percentile”)
- × Thresholds (“above 95th percentile”)
- × Incorrect BMI% plotting



Nutrition

- × Nutrition status only related to acute or chronic illness
- × Documentation regarding diet related medication side effects (i.e., ADHD medication)
- × Documentation related to appetite
- × Physical exam findings (i.e., “well-nourished”)
- × Nutrition education related to acute illness (i.e., “BRAT diet”)



Physical Activity

- × Screen time without specific mention of physical activity
- × Education related solely to safety (i.e., “wear bike helmet”)
- × Physical activity status only related to acute or chronic illness
- × Notation of “cleared for gym”
- × Documentation related only to development milestone (i.e., “able to ride a bike”)

WCC - Coding

Critical to compliance

BMI Percentile

- ICD-10 CM: Z68.51-Z68.54

Counseling for Nutrition

- ICD-10 CM: Z71.3
- CPT: 97802-97804
- HCPCS: G0270, G0271, G0447, S9449, S9452, S9470

Counseling for Physical Activity

- ICD-10 CM: Z02.5, Z71.82
- HCPCS: G0447, S9451

CODING....

- ✓ **Increases your HEDIS rates!**
- ✓ **Decreases chart review!**



Challenges

Why Gaps in Care?



BMI Percentile

- **Not coded/billed**
- If not coded and must review chart, only BMI percentile code descriptor documented
- BMI value only, ranges or thresholds only
- No EMR auto calculate or plot
- BMI plot missing, blank or does not match DOS info
- EPSDT Form limitations
- **BMI% not a printable field**



Nutrition

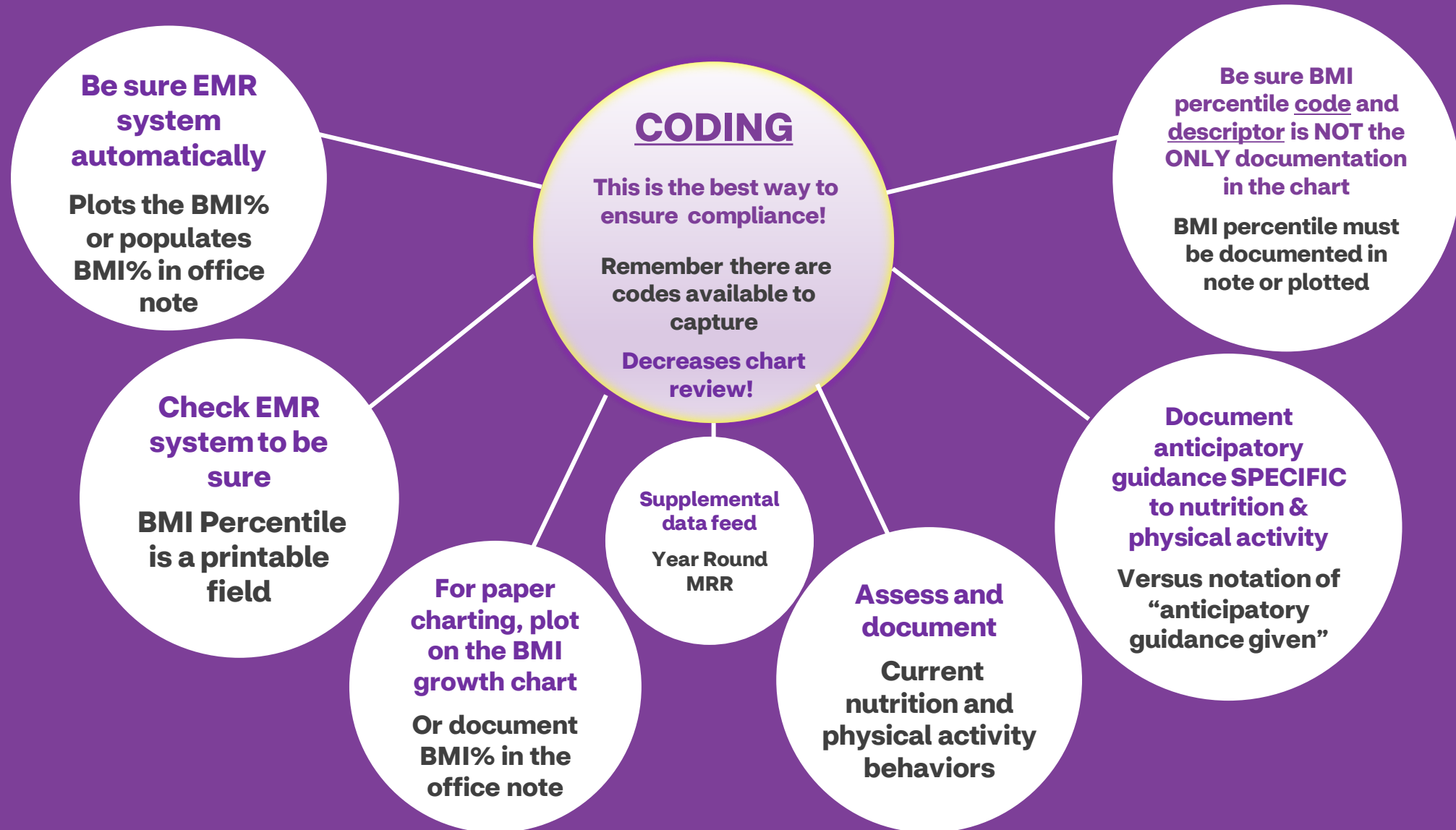
- **Not coded/billed**
- Documentation solely related to acute or chronic condition
- Documentation solely related to medication side effects
- Nutrition on EPSDT form not addressed (and not found in office note)



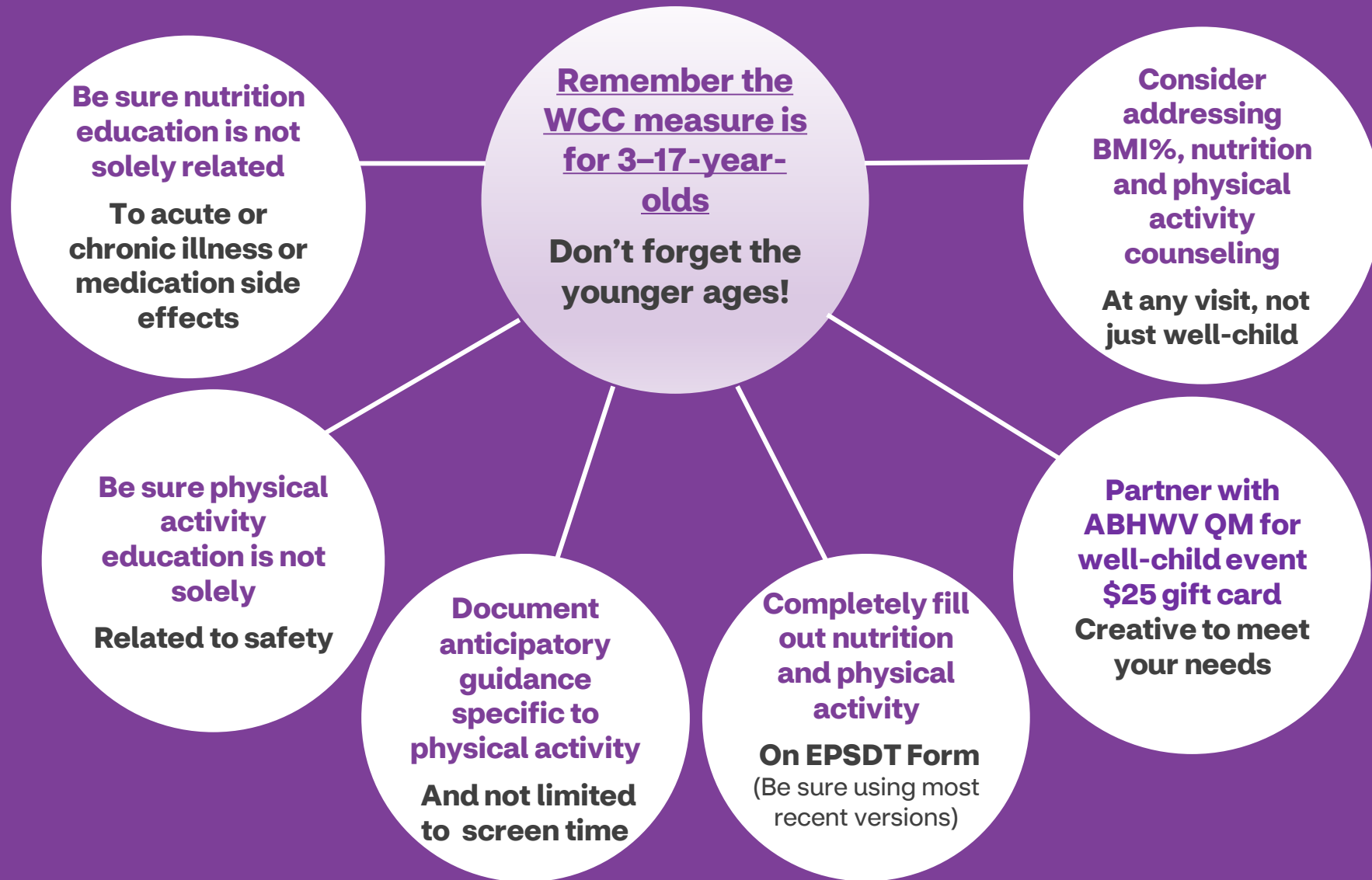
Physical Activity

- **Not coded/billed**
- Documentation solely related to acute or chronic condition
- Physical Activity on EPSDT form not addressed (and not found in office note)
- 3–4-year-olds often missing Physical Activity! Completely missing or vaguely charted playtime
- Screen time only

Take-Away Actions- WCC



Take-Away Actions- WCC



ABHWV website

Provider HEDIS Section

There is now a HEDIS tab within the Provider Tab on the ABHWV website. The following are now available:

1. **What is HEDIS?** – a short description of HEDIS
2. **HEDIS News You Can Use** –emailed to providers each month and will be available on the website, including current and prior months
3. **HEDIS Toolkit For Provider Offices** – comprehensive document of all HEDIS measures, including a coding/billing section. This is updated annually or sooner as needed.
4. **HEDIS Lunch and Learn Webinars For Providers** – monthly webinars such as the one today. Links for past webinars and invite information for the next upcoming Lunch and Learn will be here.

<https://www.aetnabetterhealth.com/westvirginia/providers/hedis.html>

Closing Thoughts and Resources

Members trust you!

Parents/caregivers/patients consider you their most trusted source of medical information.

Your guidance and encouragement is critical in their health management.

Allow time for discussion and questions. Hearing your answers can help parents/caregivers/patients feel more confident and comfortable.

ABHWV Quality Partnerships

Melani McNinch, ABHWV Quality HEDIS Manager

ABHWVHEDIS@aetna.com

304-348-2029

Event Partnering

David Roberts

robertsj13@aetna.com

304-539-9046

EMR data file transfer options

Tosha Morris

MorrisT5@aetna.com

Other Resources

Great Resources:

<https://brightfutures.aap.org/materials-and-tools/guidelines-and-pocket-guide/Pages/default.aspx>

<https://dhhr.wv.gov/HealthCheck/providerinfo/Pages/default.aspx>

https://dhhr.wv.gov/HealthCheck/providerinfo/Documents/2021_HC_PeriodicitySchedule.pdf

<https://www.aap.org/en/search/?context=all&k=obesity>

<https://dhhr.wv.gov/wvchildhoodleadpoisoning/Pages/EPSTD-Well-Child-Forms.aspx>

A high-angle, low-key photograph of five diverse children of various ethnicities and ages. They are huddled together in a circle, looking directly up at the camera with bright, joyful smiles. The children are wearing colorful clothing: a red shirt, a yellow shirt, a teal shirt, and a blue shirt. The background is a bright, slightly blurred outdoor setting with green foliage. The overall mood is positive and inclusive.

**Thank
You for
making a
difference!**

